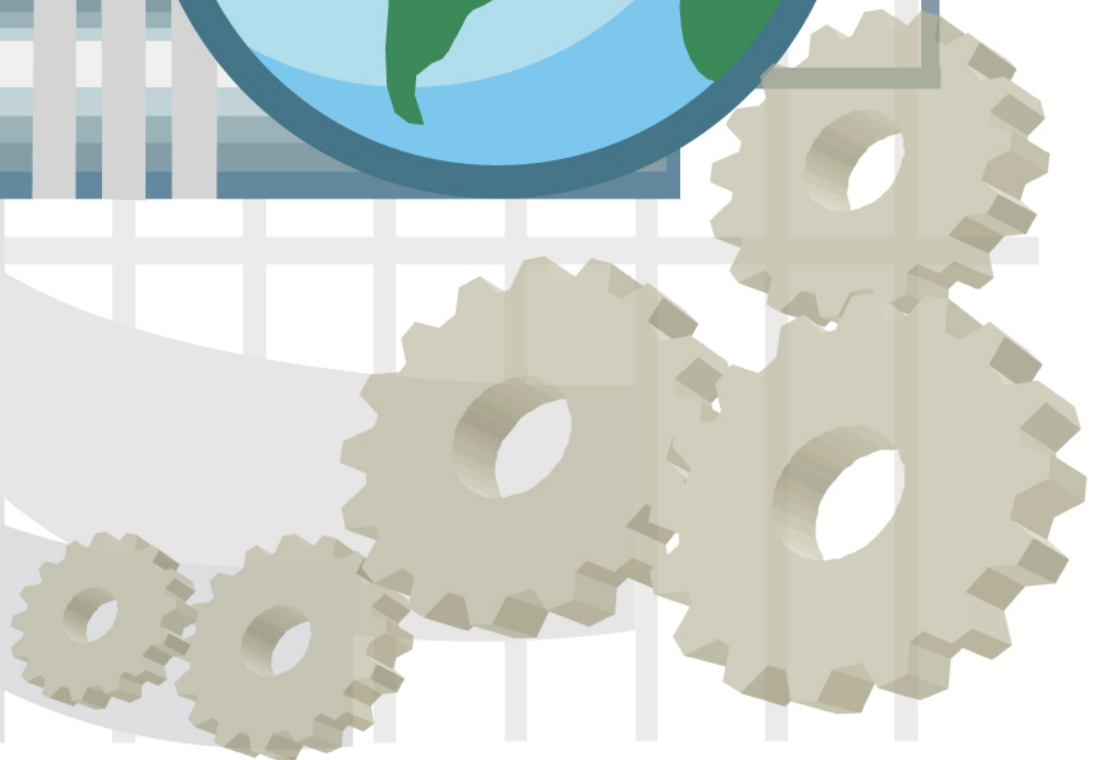




# Configuration Manual For SCADA

► *RSView 32*





## 目錄

<b>第一章 RSView32 .....</b>	<b>4</b>
1-1 OPC Server 建立 .....	5
1-2 RSView32 使用 OPC Client 與 OPC Server 連線 .....	6

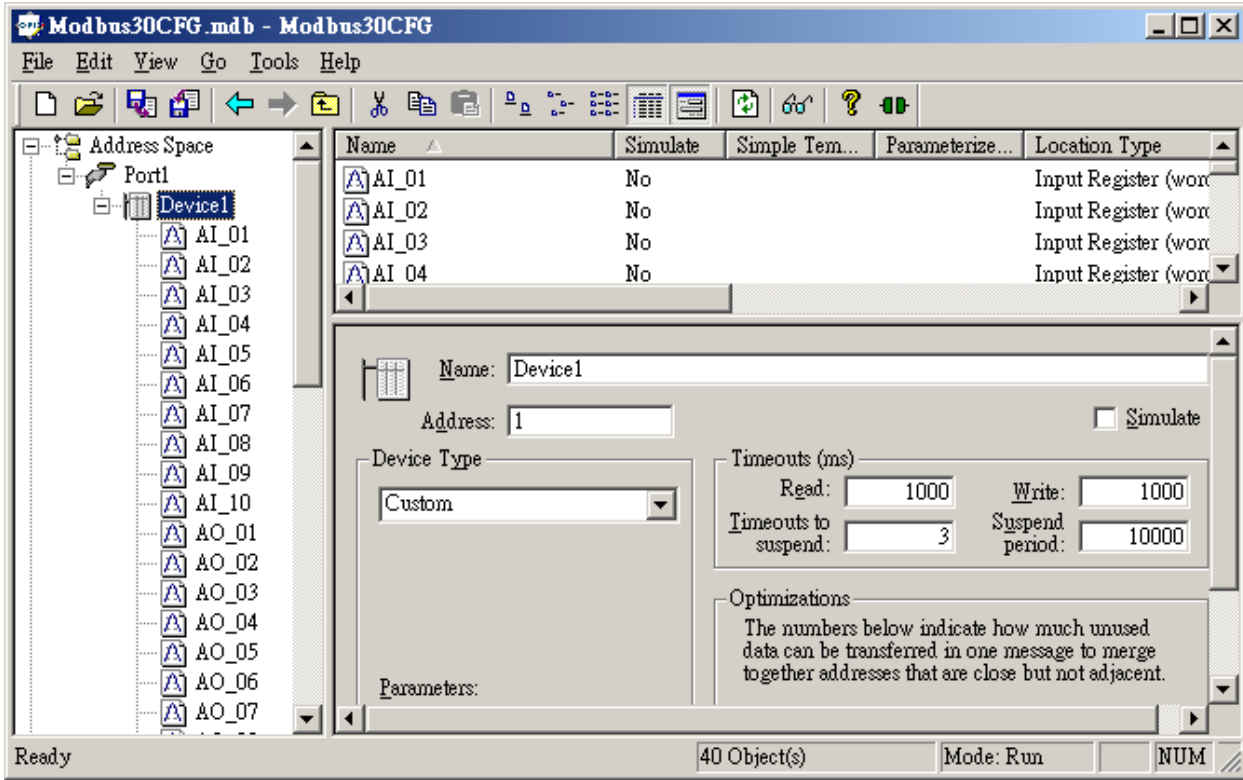
# 第一章

---

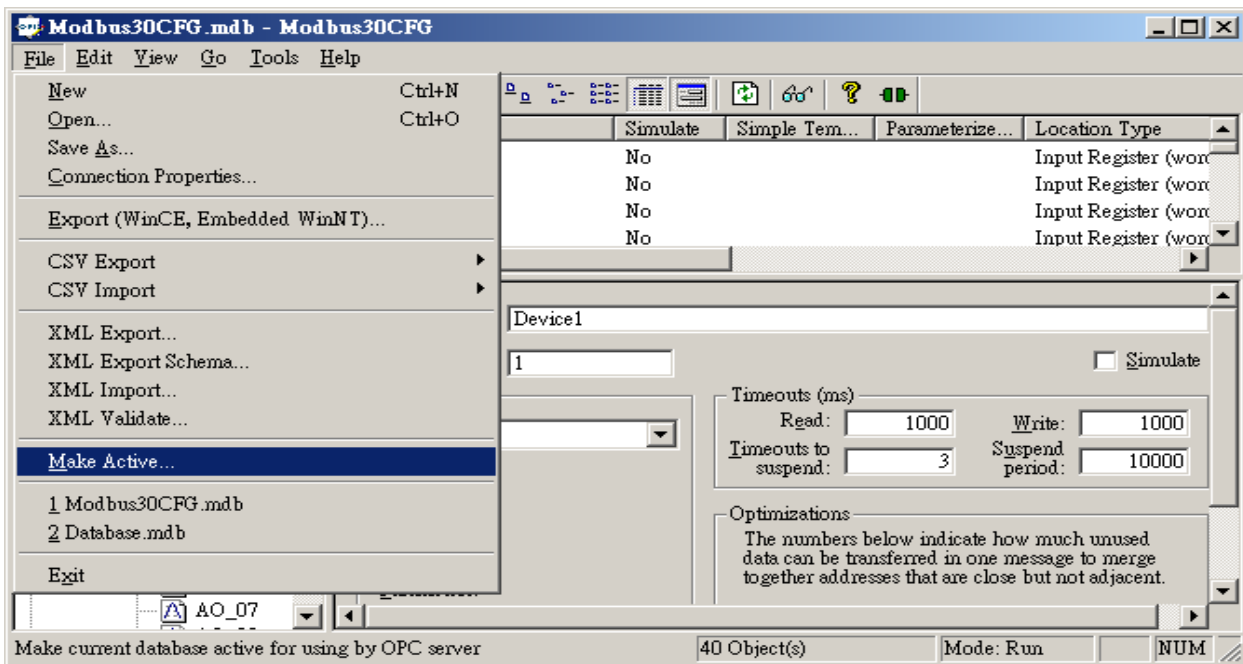
## RSView32

### 1-1 OPC Server 建立

請依照 OPC Server 操作手冊來設定訊號點

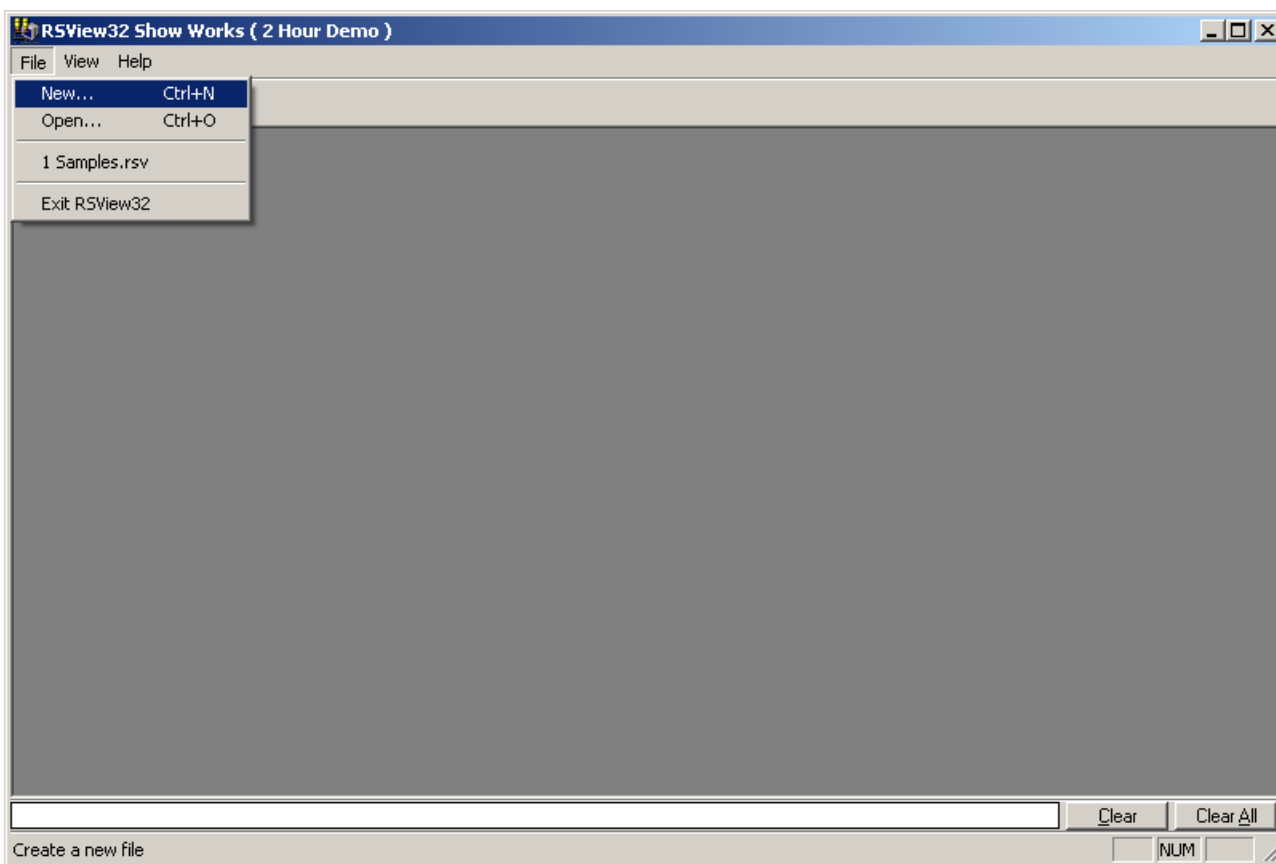


建立完成後，請點選「File」→「Make Active」儲存設定(新增的 Configuration File 才需做此設定)。

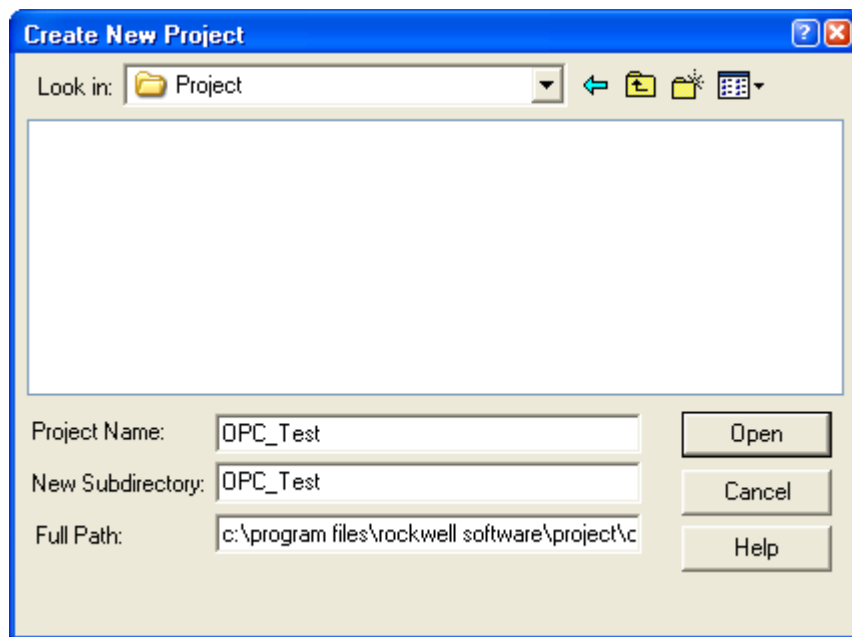


## 1-2 RSView32 使用 OPC Client 與 OPC Server 連線

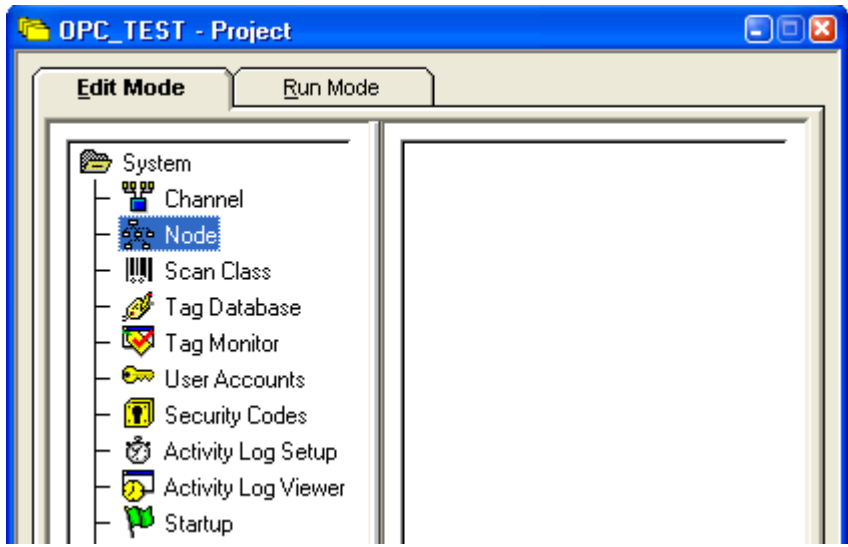
開啟 RSView32 Works，點選工具列「File」→「New」新增專案



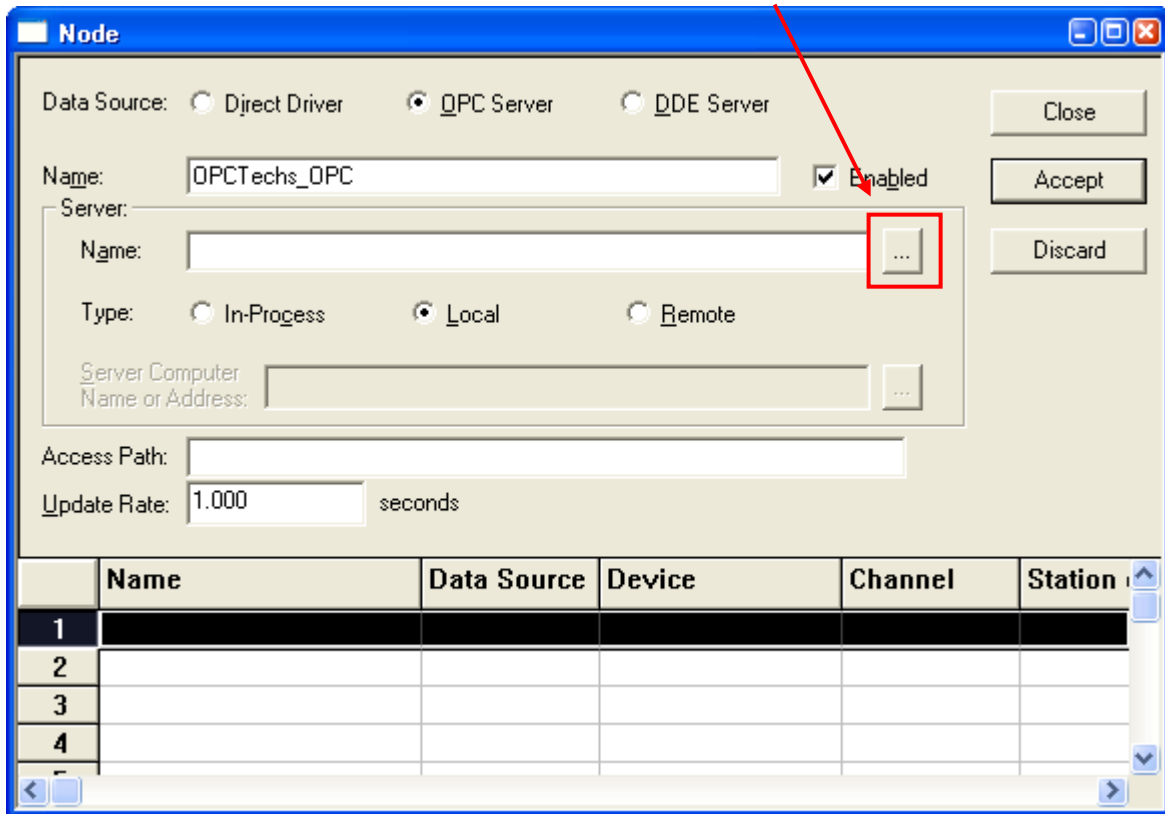
選擇存放專案的路徑，並點選「開啟」



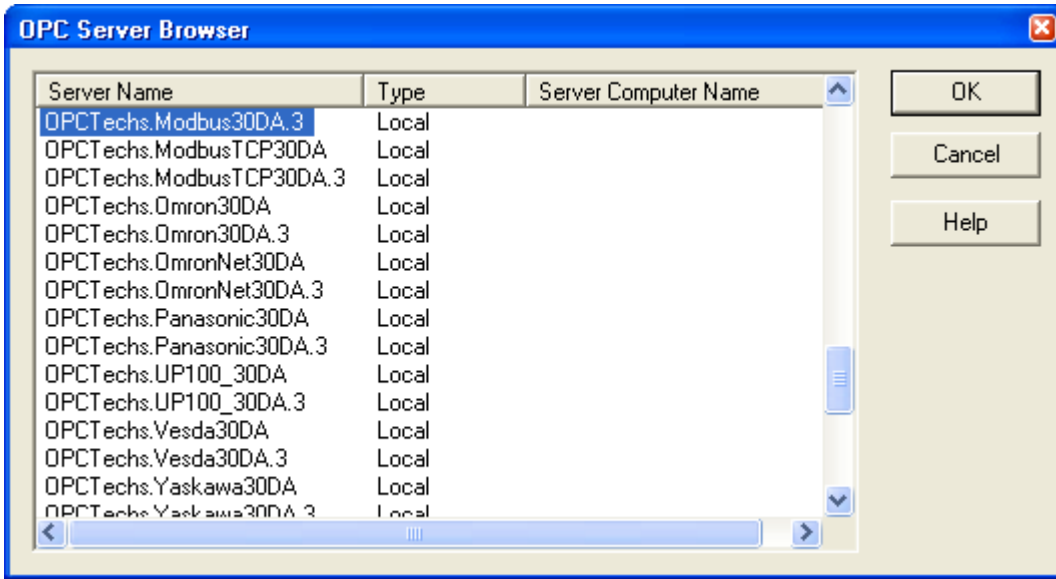
選擇「Node」選項，設定 OPC Server 連線



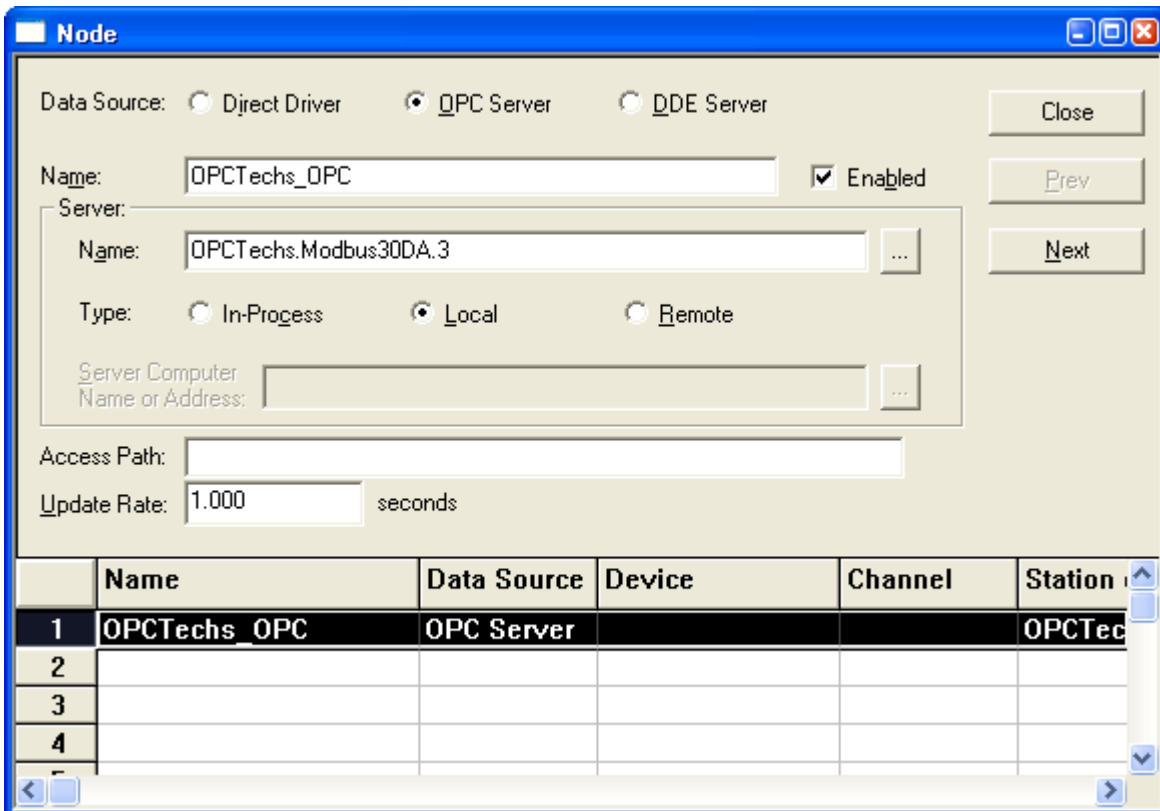
選擇「OPC Server」選項，輸入名稱並點選瀏覽 OPC SERVER 的按鈕



### 選擇欲連結的 OPC SERVER

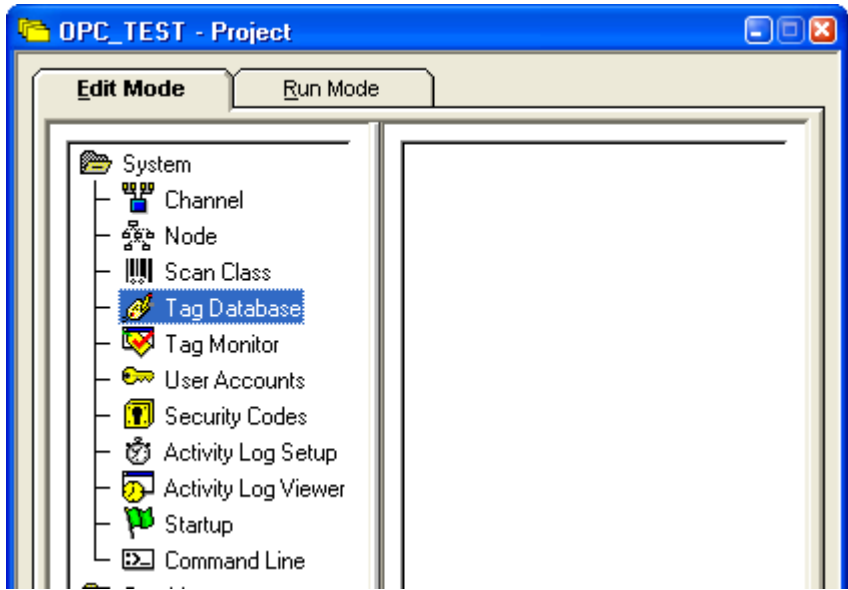


設定完成後，點選「Accept」加入所設定的 OPC SERVER。點選「Close」關閉頁面

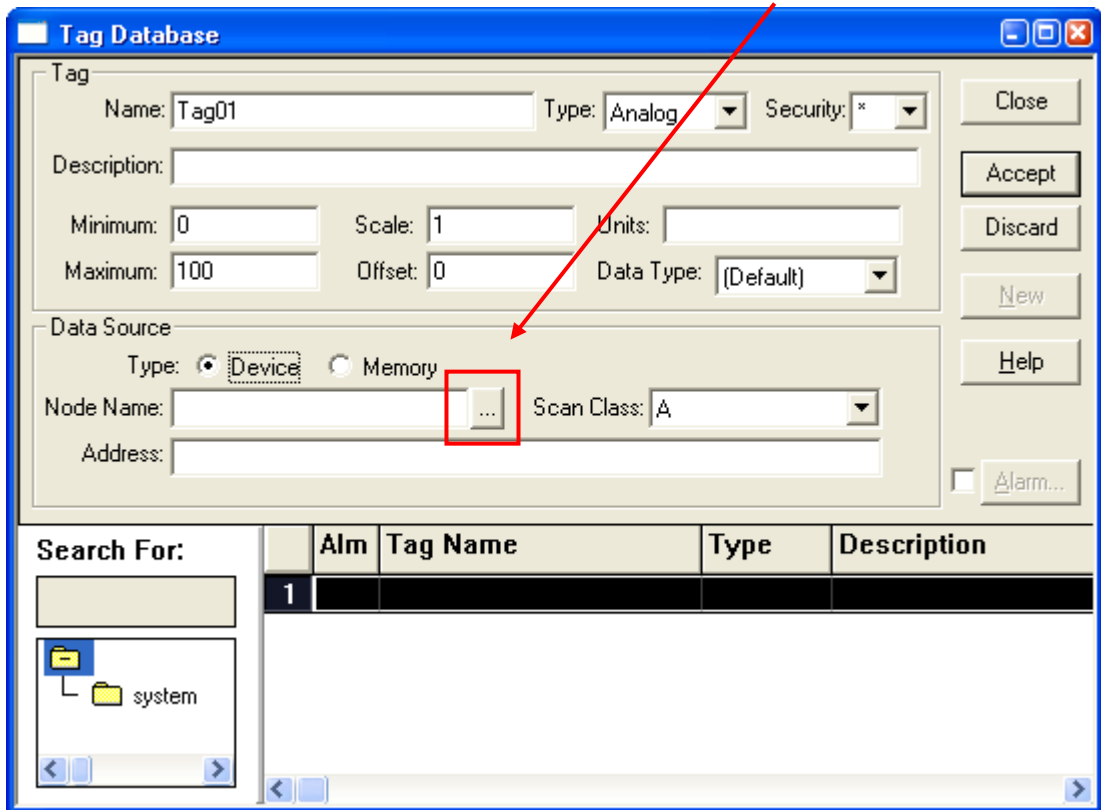




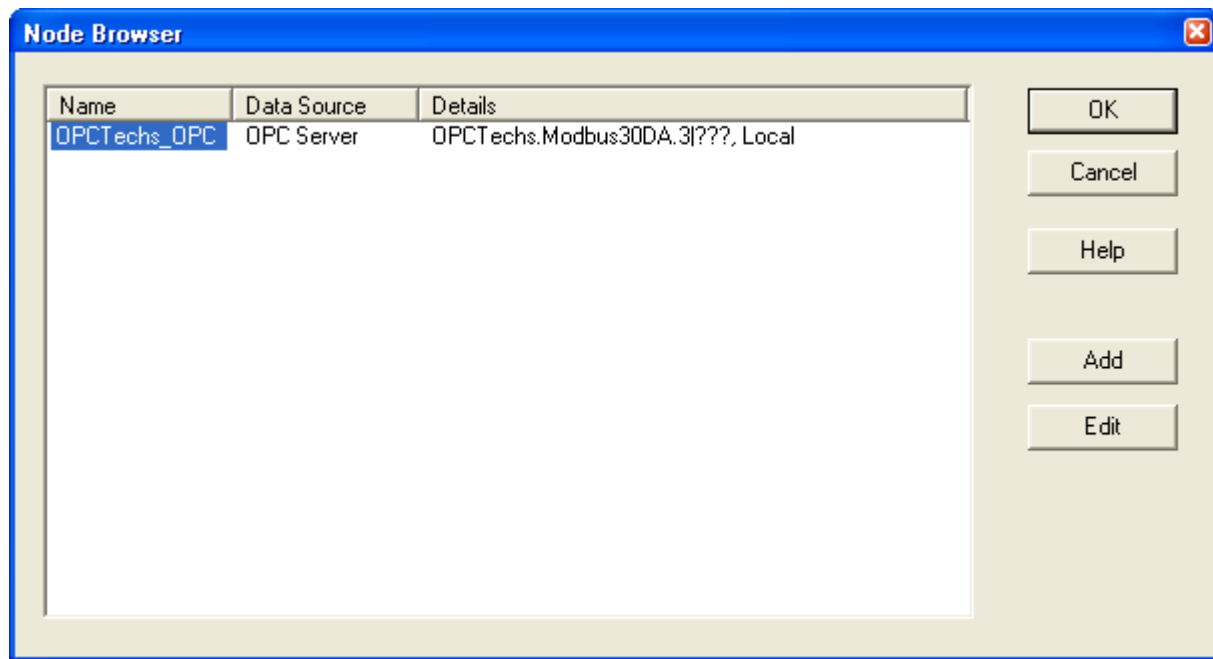
選擇「Tag Database」選項，新增 Tag



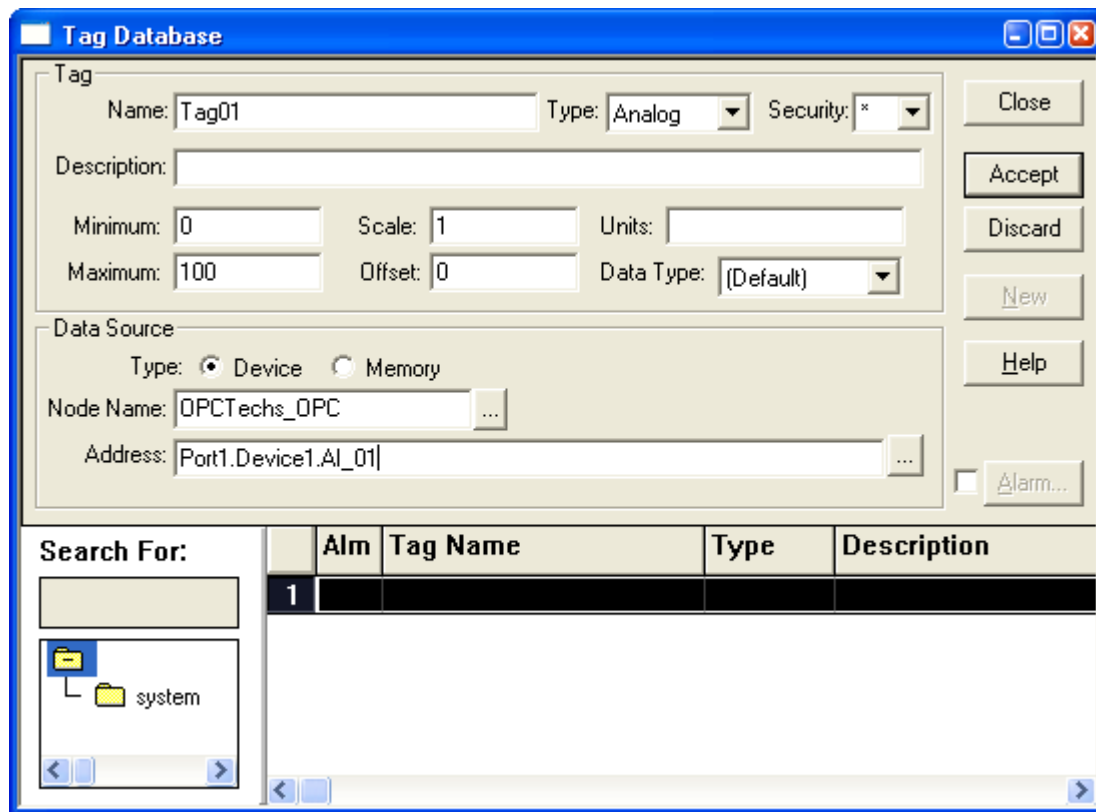
Data Source → Type 選擇 Device，點選 Node Name 瀏覽按鈕



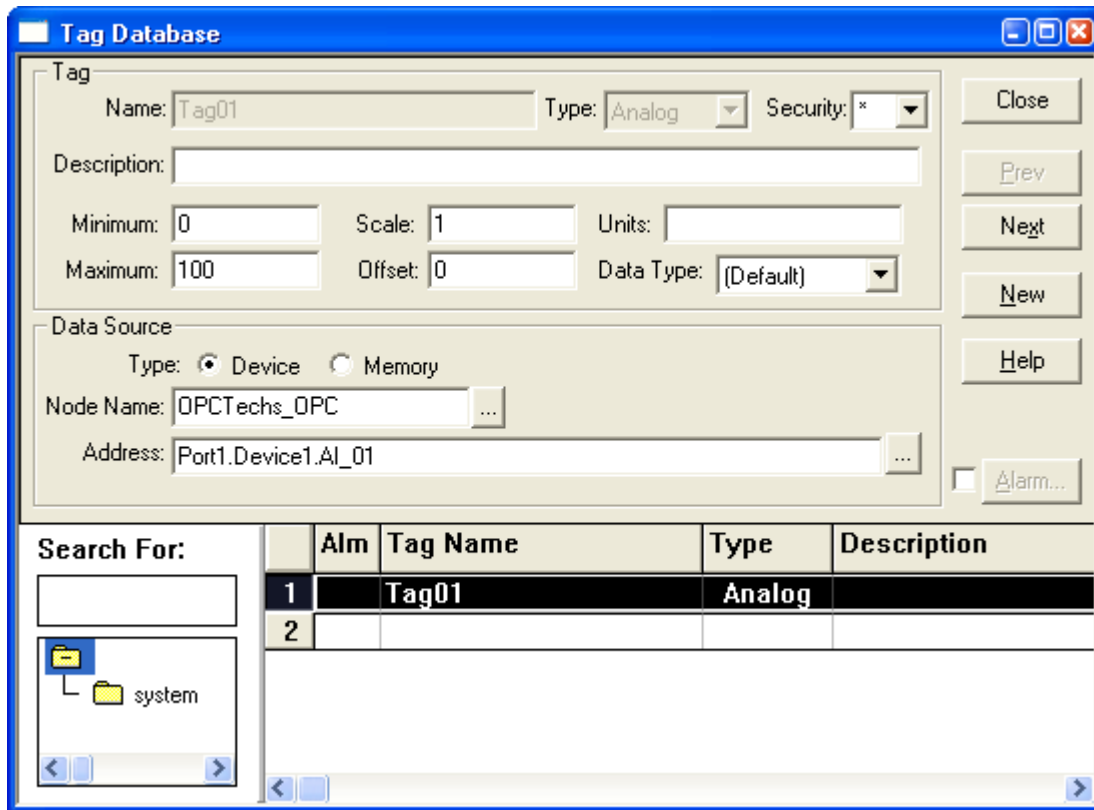
選擇先前設定完成的 Node，並點選 OK



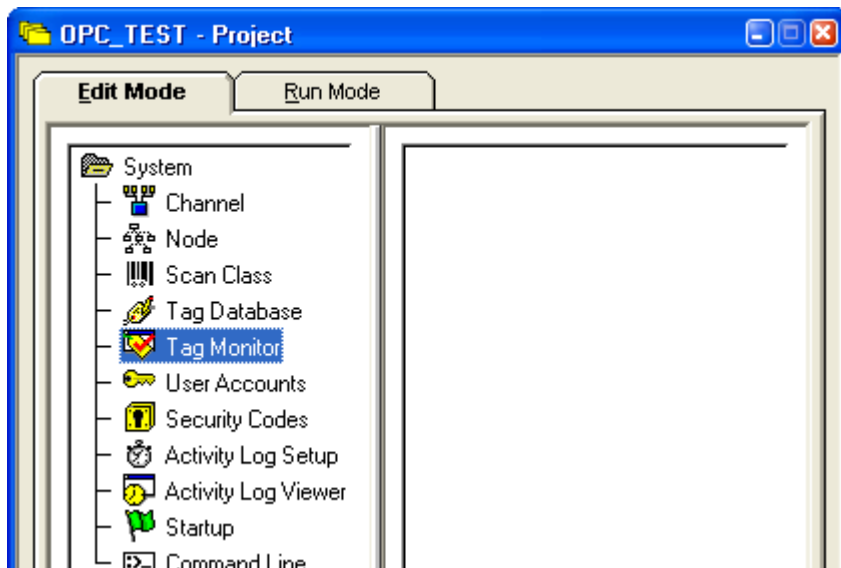
在 Address 欄位輸入 OPC Server 的 Dataltem 路徑



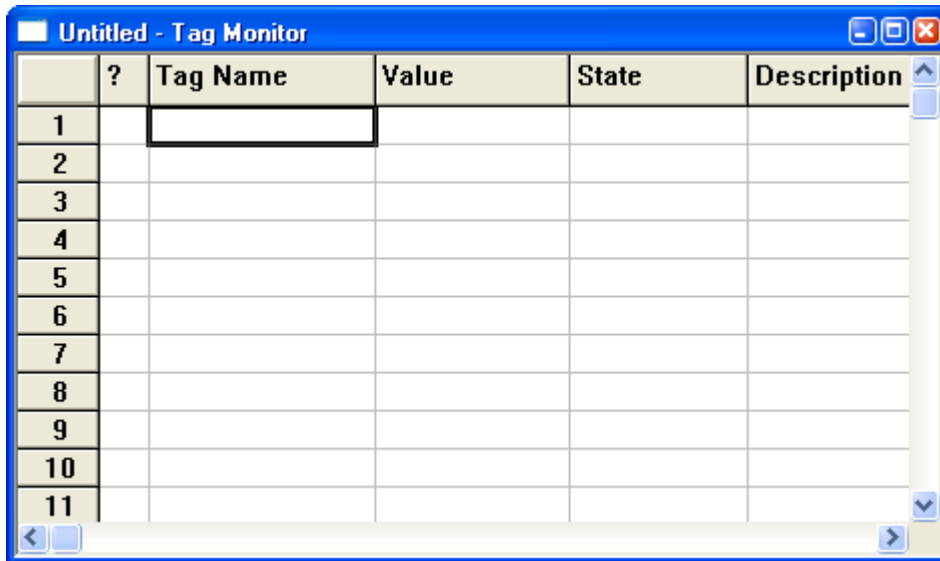
設定完成後點選「Accept」新增此 Tag



點選「Tag Monitor」顯示剛才所設定的 Tag

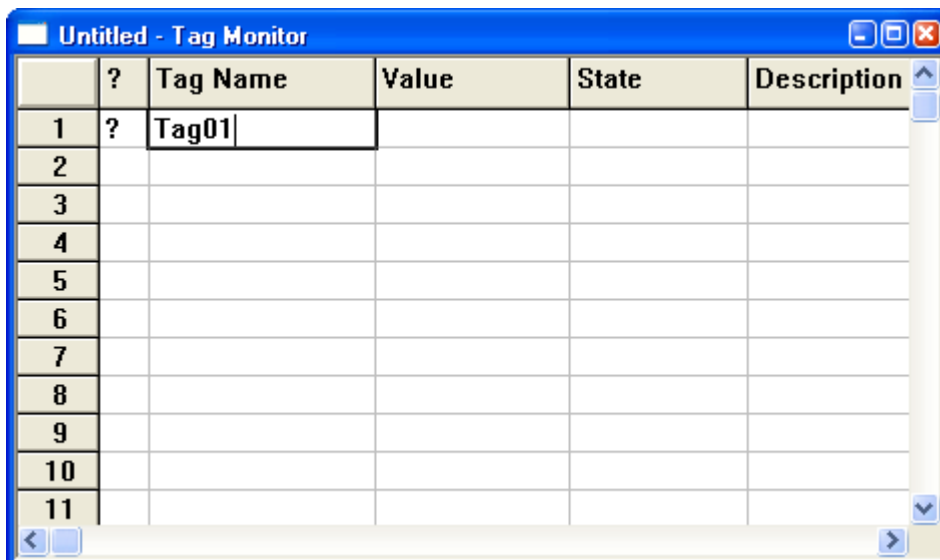


在 Tag Name 的欄位輸入剛才所設定的 Tag Name



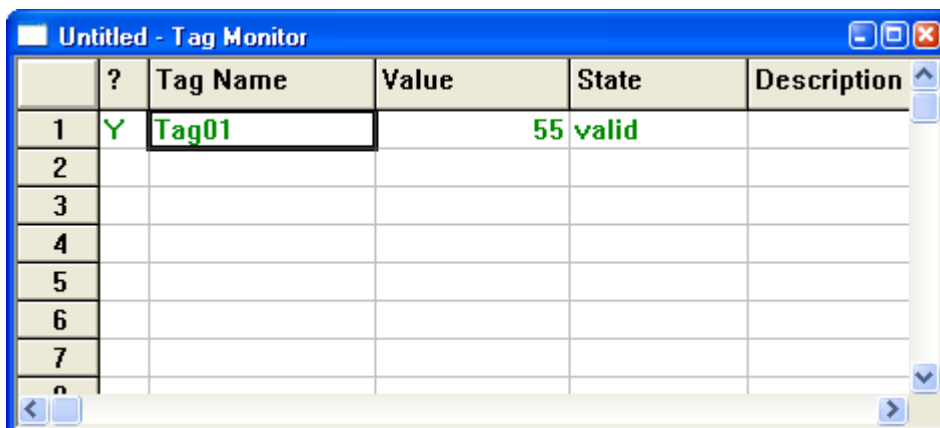
	?	Tag Name	Value	State	Description
1					
2					
3					
4					
5					
6					
7					
8					
9					
10					
11					

輸入完後按下鍵盤上 Enter 按鍵



	?	Tag Name	Value	State	Description
1	?	Tag01			
2					
3					
4					
5					
6					
7					
8					
9					
10					
11					

畫面顯示正確



	?	Tag Name	Value	State	Description
1	Y	Tag01	55	valid	
2					
3					
4					
5					
6					
7					
8					